

OSBORNE REFRIGERATORS



The Osborne *eCold* range... ...saving pennies and the planet.

The new *eCold* range from Osborne Refrigerators is designed to be good to your pocket as well as the environment. Low-voltage fans and LED lighting put very little waste heat into the cabinet and improved insulation and efficient compressors maximise cooling performance while using less energy. *eCold* cabinets are also designed to be virtually maintenance-free, with no fluorescent tubes to change, and condensers that never require unblocking.

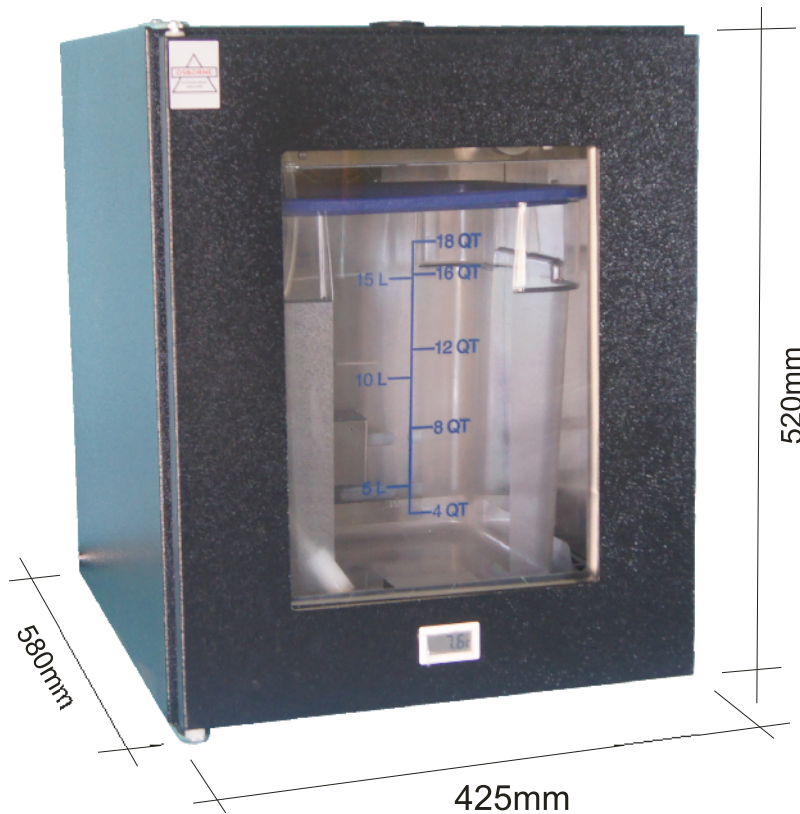
Osborne Refrigerators Ltd have been established at our West Sussex base for more than 50 years and we are the leading British manufacturer of refrigerators designed for the chilling and storage of wine and cold beverages. All our chillers are also suitable for storing foodstuffs. As well as our standard range of cabinets, which are specified by leading breweries, drinks manufacturers and leisure companies across the world, we also produce a range of high quality cabinets designed specifically for the refrigeration of milk for coffee machines.

All our refrigerators use CFC free polystyrene insulation and can be efficiently recycled at the end of their life. They are also available with a choice of refrigerants.

The Osborne range is always evolving, due to our commitment to constantly improve our products and also in response to specific customer requirements. We have built an enviable reputation for the quality and reliability of our refrigerators and we will never stop working to maintain that reputation.

Details

The MM4M is a compact chiller, suitable for beverages and foodstuffs but designed primarily for the storage of milk. It is manufactured from rust resistant zinc-coated steel with a hard wearing black powder-coat finish and the interior is stainless steel. The interior is fan assisted for enhanced chilling and the condenser is maintenance-free for efficiency and ease of use. The insulation is environmentally friendly polystyrene and the refrigeration system uses R600a hydrocarbon refrigerant (R134a is also available as an option). The door is double glazed and features a temperature readout. A solid door is available as an option.



Model MM4M

Features

Fan assisted evaporator for rapid cooling
 Maintenance-free condenser
 Automatic defrost and re-evaporation
 LED lighting & low voltage fans
 Digital temperature controller
 Double glazed door
 Temperature readout

Model Number	MM4M
<u>Physical Info</u>	
Height (mm)	520
Width (mm)	425
Depth (mm)	580
Nett Capacity (ltr)	48
Gross Weight Packed (kg)	30
<u>Technical Info</u>	
Voltage (V)	220-240
Frequency (Hz)	50 (or 60Hz on request)
Rated Power (W)	65
Refrigerant Type	R600a
Product Temperature Range (°C)	1-5
Insulation Type	Polystyrene, CFC Free
Insulation Thickness (mm)	37

OSBORNE REFRIGERATORS LTD
 Rose Green Road
 Bognor Regis
 PO21 3EG
 United Kingdom

Tel +44 1243 267711
 Fax +44 1243 265853
 sales@osborne-ref.co.uk
 www.osborne-ref.co.uk